



**REVELSTOKE COMMUNITY  
FOREST CORPORATION  
TREE FARM LICENCE 56**

**Support Document for  
FOREST STEWARDSHIP PLAN  
2005 – 2010**

**October 13, 2005**

## CONTENTS

1.0	Introduction .....	1
2.0	Forest Development Units .....	1
3.0	Declared Areas .....	1
4.0	Other Plans .....	2
5.0	Objectives Strategies and Results .....	4
6.0	Other Measures .....	9
6.1	Stocking Standards	
6.2	Invasive Plants	
6.3	Range Barriers	
6.4	Commercial Helicopter and Backcountry Recreation	
6.5	Referral Consultation Pilot Project	
7.0	Cumulative Effect of Multiple FSP's .....	12
8.0	Review .....	12
9.0	Revisions .....	12
10.0	Maps .....	13

## 1.0 INTRODUCTION

The purpose of this document is to provide extra information in support of the Forest Stewardship Plan (FSP). **This document is not part of the FSP.** The Support Document and the FSP itself have been prepared for TFL 56 by RCFC staff. Azimuth Forestry and Mapping Solutions has prepared the FSP Map.

## 2.0 FOREST DEVELOPMENT UNITS

Forest Development Units (FDU's) indicate areas that will contain forest development activities, and that will have a common set of objectives, results, and strategies.

The FDU's were determined simply by using the boundaries of the Landscape Units. During the review process, it was noted that there was some confusion around the inclusion of private land adjacent to the Tree Farm Licence. No private land is included in FDU's. As well, the abandoned provincial park at Downie Reach (labelled "Provincial Park Reserve" on the FSP map) is not included. Nor is TL2980 included. Only lands within TFL 56 are included in the FDU's.

## 3.0 DECLARED AREAS

**During the review process, it was noted that legally speaking, only areas already included in an FSP can be "declared". Therefore there are no declared areas in this FSP yet.** However, section 196 of the FRPA allows "protection of cutblocks and roads from a forest development plan into a forest stewardship plan". Wording has been changed to reflect this and the same blocks that were called "declared" are now "protected".

The protection of blocks and roads under Section 196 of FRPA at first appeared to be a simple task. The intention appeared to be that blocks that were "Category A" in the Forest Development Plan would be *grandparented* into the FSP to protect investments. However, there is a spectrum of "Category A" blocks – there are those with layout and engineering entirely done while at the other end of the spectrum are those that have merely been placed in the FDP based upon aerial photo and map interpretation. There is also everything in between.

To qualify as for Section 196(1) protection, a block or road must have been in the FDP as a Category A block, and must have all *necessary* assessments complete.

To determine which **blocks** qualified, the following criteria were considered:

1. The block had to be classed as *Category "A"* in most recent approved FDP (Amendment # 25)
2. Section 16 Assessments were not criteria because they are only considered when *community watersheds* are present. RCFC has no community watersheds.
3. Section 17 assessments apply to areas with a high likelihood of landslides, unstable terrain, or slopes of over 60%. These assessments were considered completed when a geotech had examined the site. They were considered to be unnecessary when TSIL 'D'

- mapping did not indicate that the slopes were unstable or potentially unstable (areas over 60% were all shown as at least potentially unstable).
4. Section 37 assessments are those assessments required in Site Plans. However several do not apply to TFL 56:
    - Scenic areas:** *None in TFL 56, so this does not apply*
    - Gully assessments:** *Applies to the coast only*
    - Pest Incidence survey:** *The DM has not required any on TFL 56, so this does not apply to any blocks*
  5. One Section 37 assessment was required and completed for the entire TFL:
    - Archaeological Impact Assessments:** (AIA's) – Ktunaxa-Kinbasket experts have reviewed all blocks in the FDP. Those requiring assessments were “tagged”. When the assessments have been completed on the tagged blocks, this requirement is met. This requirement is unnecessary when the Ktunaxa-Kinbasket experts did not tag the block
  6. Other Section 37 assessments may or may not have been required. These requirements were considered met after an individual examination of the block or road determined that they were necessary (and then completed) or unnecessary. These assessments include:
    - TSFA, when identified by DM as needing a TSFA
    - TSFA, when Moderate likelihood of landslides with ground-based skidding, or excavated trails needed
    - TSFA – when instability indicators found in block
    - Riparian Assessments – when the riparian assessment done for the entire TFL is not considered to be adequate

To determine which **roads** qualified, the following criteria were considered:

1. Road must be laid out in the field
2. TSFA must be completed if needed

## 4.0 OTHER PLANS

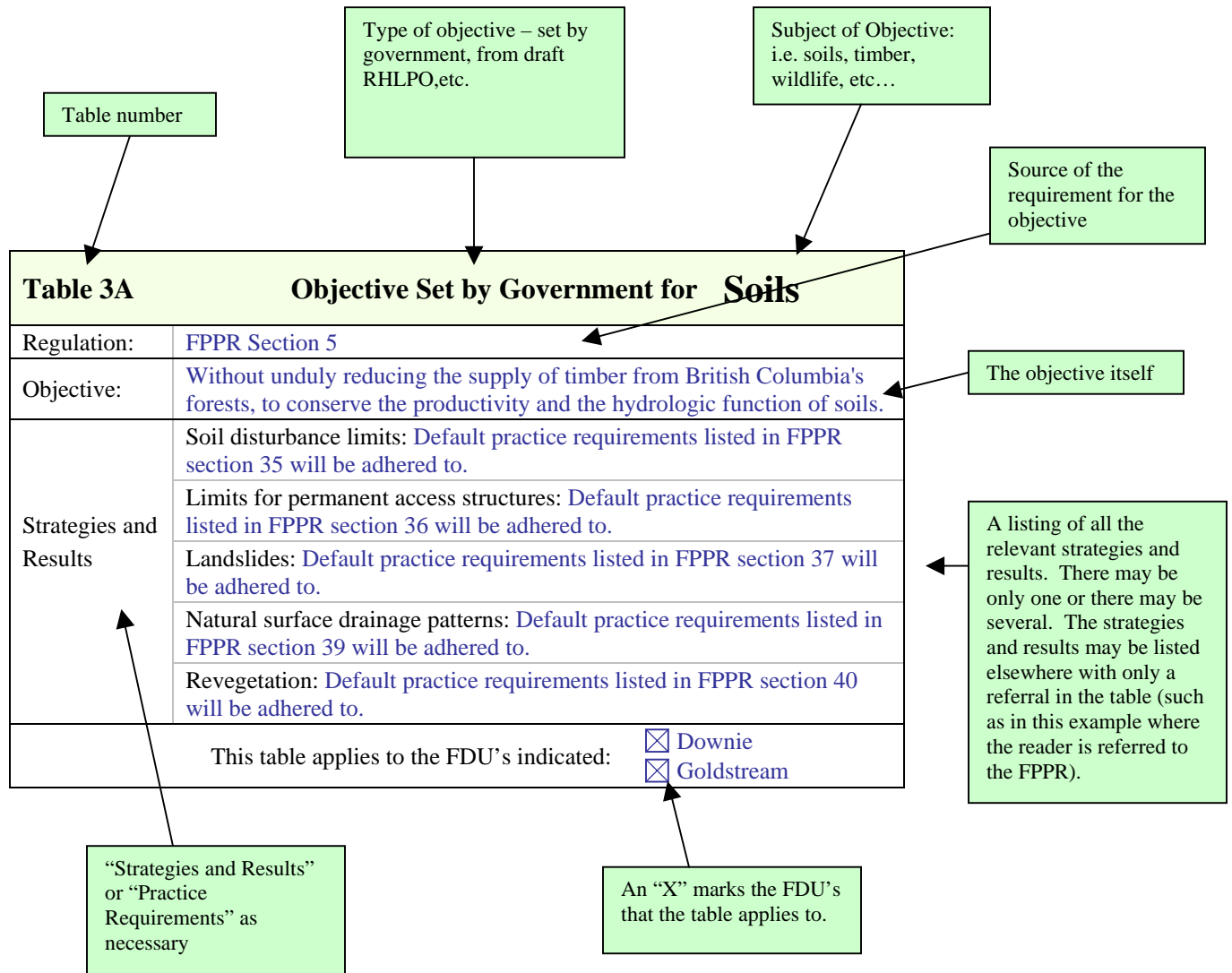
The *Revelstoke Higher Level Plan Order* (RHLPO) is now in affect. RCFC has been complying with all aspects of the Minister's Advisory Committee (MAC) plan since it was completed several years ago -- and the RHLPO is simply a derivative of the MAC plan. So to continue to honour the spirit and intent of the MAC plan, we have crafted objectives, strategies and results for the RHLPO. The wording was later changed from “strategies and results” to “practice requirements” to satisfy the lawyers.

As well, the recommendations in the *Keystone Standard Basin Local Resource Use Plan* have been followed since its completion in 1993. We have structured one set of objectives, strategies and results for the visual quality portion of the plan. This was moved to the support document at the request of Forest Service staff. The “caribou” portion of the Keystone Standard Basin LRUP has been eclipsed by the MAC plan and draft RHLPO, so we felt that the practice requirements tailored for the caribou portion of the draft RHLPO are adequate for the Keystone Standard Basin LRUP area.

There are clear objectives, strategies, and results for wildlife in the draft RHLPO. However, it should be noted that mountain caribou are the subject of an active Recovery Implementation Group. This group is working on a recovery action plan and this plan, when complete, may have actions that are over and above the strategies and results specified in this FSP. Therefore, the completion of this mountain caribou recovery action plan may necessitate changes to this FSP.

## 5.0 OBJECTIVES, STRATEGIES, AND RESULTS

The key to the FSP is the objectives, strategies, and results (or practice requirements). In the FSP document, these are summarized in Tables 2A to 2D. Then each objective with its strategy(s) and result(s) is displayed in a table that looks something like this:



The following table was in the originally submitted FSP but was moved to this support document at the request of legal staff of the Ministry of Forests. The intention of the table is to indicate that RCFC reviewed all of the GAR categories or measures and concluded that none were applicable to RCFC at this time.

Category of Objective or Measure	Legislation	Relevance to TFL 56	FSP Table
<i>From Government Actions Regulation<sup>1</sup></i>			
Resource feature	GAR s.5	No “notice” posted	None
Lakeshore management zones and objectives	GAR s.6	No “notice” posted	None
Scenic areas and visual quality objectives	GAR s.7	No “notice” posted	None
Community watersheds and water quality objectives	GAR s.8	No “notice” posted	None
General wildlife measures	GAR s.9	No “notice” posted	None
Wildlife habitat areas and objectives	GAR s.10	No “notice” posted	None
Wildlife habitat features	GAR s.11	No “notice” posted	None
Ungulate winter ranges and objectives	GAR s.12	No “notice” posted	None
Species at risk, regionally important wildlife and ungulate species	GAR s.13	No “notice” posted	None
Fisheries sensitive watersheds and objectives	GAR s.14	No “notice” posted	None
Temperature sensitive streams	GAR s.15	No “notice” posted	None

#### GAR Objectives and Their Relevance in TFL 56

The tables below were crafted to show RCFC’s commitment to the Keystone Standard Basin Local Resource Use Plan (KSBLRUP). However, these plans apparently have no legal place in “the FRPA world” and as such the Forest Service staff have asked RCFC to remove any reference to the KSBLRUP from the FSP document itself. RCFC wishes to show its commitment to the principles of the KSBLRUP by undertaking to comply with the Tables below.

Category of Objective or Measure	Relevance to TFL 56	FSP Table
<i>From Keystone Standard Basin Local Resource Use Plan (KSBLRUP)</i>		
Forest management in visual quality objective zone	Areas deemed visually sensitive within TFL 56 by KSBLRUP	Table 5A
Forest management in caribou management zone	Areas deemed to be important caribou habitat by the KSBLRUP committee are also zoned as caribou habitat in the RHLPO. The requirements in the RHLPO will be followed, so there is no need to have additional objectives and standards	Table 4B
Forest management in wilderness zone	No harvesting or other forest management activities	none

#### *Keystone Standard Basin Local Resource Use Plan Objectives and Their Relevance in TFL 56*

<sup>1</sup> Strategies, results or measures need not be developed unless a “notice” is posted as per GAR s. 4(1)

Keystone Standard Basin LRUP: <b>Visual Quality</b>	
KSBLRUP:	<a href="#">Keystone Standard Basin Local Resource Use Plan: Section 3.112</a>
Objective:	<a href="#">Minimize impact on visual landscape while allowing limited timber harvesting</a>
Strategies and Results	<p>Strategy: Limit harvesting impacts on visual landscape by employing techniques to reduce visual impacts and reduce harvesting to that allowed by the Visual Quality Objective of <i>partial retention</i>.</p> <p>Result: A landscape with less than 15% of the viewable area in a non-greened up stated (trees less than 5 metres tall). The viewpoints used for this assessment will be along the Keystone trail.</p>
Objective, strategies, and results apply to these Forest Development Units:	
	<input checked="" type="checkbox"/> Downie <input checked="" type="checkbox"/> Goldstream

### Large Cutblocks

Cutblock size is limited to 40 hectares by regulation. However, larger cutblocks can sometimes be allowed. RCFC will, in the following circumstances, plan harvest of cutblocks larger than 40 hectares:

- Salvage of timber damaged by fire, insects, wind, or similar events.
- To create openings consistent with the structural characteristics and the temporal and spatial distribution of openings that would result from a natural disturbance. However:
  - The structural characteristics of the cutblock after timber harvesting has been substantially completed will substantially resemble an opening that would result from a natural disturbance. A qualified registered professional will be retained to review the harvest plans and ensure that they will conform to this point.
  - Prior to commencement of harvest, the Columbia Forest District Office will be informed of the plans and afforded opportunity to comment.

### Coeur d’Alene salamander

The FPPR section 7 requires that, when a notice is published, objectives, strategies and results be formulated for the species for which the notice has been published. The only species that is currently specified through a “notice” for the TFL 56 area is the Coeur d’Alene salamander. Other species at risk are dealt with through the impending Revelstoke Higher Level Plan Order. The closest known occurrence of Coeur d’Alene salamander to TFL 56 is near Revelstoke – at least 30 km south of TFL 56. The Coeur d’Alene salamander “notice” requirements have been met through efforts made elsewhere within its range. Therefore no special measures are needed in TFL 56.

### Revelstoke Higher Level Plan Order

([http://srmwww.gov.bc.ca/kor/hlp/plan\\_order041101.htm](http://srmwww.gov.bc.ca/kor/hlp/plan_order041101.htm))

This order was, until recently, still in the draft stage. We have devised objectives, strategies and results for the parts of the RHLPO that apply to TFL 56.

### Keystone Standard Basin Local Resource Use Plan

There are a series of management strategies in this LRUP. For several, such as those relating to mining and snowmobiling, RCFC has no jurisdiction. We have considered only those that have a

forest management component – visual management and caribou habitat management. Caribou management has been covered by the RHLPO, so there was no need to create additional objectives, strategies, and results. Only visual management remained, so we have created objectives, strategies, and results for visual quality (These have been moved to the Support Document from the FSP document).

### **Recreation Sites**

The Columbia Forest District published objectives for the two recreations sites within TFL 56 – *Keystone Standard Basin*, and the *Goldstream Canoe Route*. Both sets of objectives are quite broad, so we have created strategies for the parts of the objectives that RCFC, as the holder of the TFL, has control or influence.

For the Keystone Standard Basin trail, we have stated that harvesting is allowed along the trail, but will be partial cutting. When reviewing this, one must keep in mind that the portion of the trail in the timber harvesting landbase is on a few hundred meters of the 17 or 18 km length. Also, the portion in question is not the historical portion, but is a connector, built within the last 30 years to connect the end of the logging road with the historic trail.

### **Mature Forest Retention Areas**

RCFC must maintain certain levels of certain age classes as once defined in the MAC Plan and now in the RHLPO. In 1999, RCFC completed a spatial analysis of these requirements. This analysis is described in the Management Plan #3 and it designated a series of Mature Forest Retention Areas (MFRA's) throughout TFL 56 – these MFRA's are mapped. As long as all cutblocks are proposed outside of the MFRA's, all of our mature and old forest requirements specified in the RHLPO are met.

Occasionally, changes are made to MFRA's. MFRA's are not meant to be permanent and can be moved as long as the RHLPO requirements are still met. Since 1999, there have been small changes to the MFRA's. We have maintained a ledger of the total MFRA's – the current condition is specified below. The Mapped MFRA's are shown on the FSP Map.

## Summary of Caribou, Ungulate, and Biodiversity Management Zones in TFL 56

Zone description (Landscape Units: Downie=R12 and Goldstream=R19)	Status of forest cover requirement	Note	Special treatment	Total Area *	Required MFRA*		Actual MFRA's*	
					ha	%	ha	%
Downie - Low BioD - ICH mw3 operable NDT1	Deficit in old	1	Mature will age to "old".	255	36	14%	124	49%
Downie - Low BioD - ICH wk1-operable NDT1	OK		--	4184	544	13%	2018	48%
Downie - Low BioD - ICH vk1-operable NDT1	OK	5	--	3204	416	13%	931	29%
Downie - Low BioD - ESSF vc-operable NDT1	OK		--	7137	1356	19%	3966	56%
Downie - Inter BioD - ICH mw3-operable NDT3	Deficit in old	1	Mature will age to "old"	1731	398	23%	686	40%
Downie - Inter BioD - ICH wk1-operable NDT1	OK		--	2936	998	34%	1343	46%
Downie - Inter BioD - ICH vk1-operable NDT1	OK	5	--	3782	1286	34%	1504	40%
Downie - Inter BioD - ESSF vc-operable NDT1	Deficit in old	1	Mature will age to "old"	151	54	36%	72	48%
Goldstream - Low BioD - ICH wk1-operable NDT1	Deficit in old	1	Mature will age to "old"	2115	275	13%	789	37%
Goldstream - Low BioD - ICH vk1-operable NDT1	Deficit in old	1	Mature will age to "old"	4433	576	13%	1308	30%
Goldstream - Low BioD - ESSF vc-operable NDT1	Deficit in old	1	Mature will age to "old"	3356	638	19%	1143	34%
Goldstream - Inter BioD - ICH wk1-operable NDT1	Deficit in mature Deficit in old	1	No further harvesting planned	900	306	34%	378	42%
Goldstream - Inter BioD - ICH vk1-operable NDT1	Deficit in old	1	Mature will age to "old"	2999	1020	34%	1246	42%
Goldstream - Inter BioD - ESSF vc-operable NDT1	Deficit in old	1	Mature will age to "old"	147	53	36%	54	37%
Downie - Caribou - ICH - 94 Op	Slight deficit in mature (>140yrs)	3	MFRA's contain recruitment areas. No new blocks in mature or old forests.	4643	1857	40%	2061	44%
Downie - Caribou - ESSF - 94 Op	Deficit in old	1	MFRA's contain mature areas that will become "old" within 3 decades	2051	820	40%	906	44%
Downie - Caribou - ESSF - above 94 Op	OK		--	1414	990	70%	1258	89%
Downie - Recruit. Caribou - ICH	Deficit in mature and old	4	Recruitment MFRA's in place	2632	1053	40%	1489	57%
Downie - Recruit. Caribou - ESSF	Deficit in mature and old	4	Recruitment MFRA's in place	973	389	40%	545	56%
Downie - Inter Caribou - ICH	OK		--	2716	923	34%	1010	37%
Downie - Inter Caribou - ESSF	OK		--	2155	776	36%	1445	67%
Goldstream - Caribou - ICH - 94 Op	Deficit in old	1	Mature will age to "old"	1141	456	40%	456	40%
Goldstream - Caribou - ESSF - 94 Op	Deficit in old	1	Mature will age to "old"	731	293	40%	294	40%
Goldstream - Caribou - ESSF - above 94 Op	OK		--	423	296	70%	305	72%
Goldstream - Recruit. Caribou - ICH	Deficit in mature and old	4	Recruitment MFRA's in place	2666	1067	40%	1085	41%
Goldstream - Recruit. Caribou - ESSF	Deficit in mature and old	4	Recruitment MFRA's in place	55	22	40%	22	41%

\*Total area indicates entire forested area regardless of the age class. Required MFRA refers to the mature and/or old component. Requirements are derived from the RHLPO. Note that the numbers will not add up to total forested landbase or total MFRA area because of overlaps in the management zones.

Notes:

- Many areas have a deficit in the "old" requirement (250 years and older). This is an artefact of the forest inventory. The age class 8 stands are often actually age class 9. In all cases, sufficient quantities of stands classified as age class 8 are reserved and will become age class 9 over the next few decades.
- The MFRA's have enough area in forest, but not enough mature forest. The modeling process for MP#3 was used to model further constraints to ensure that the deficit was eliminated as soon as possible.
- This caribou zone has a slight deficit in mature forest, although there is sufficient area in MFRA's. For this reason, no new blocks will be proposed in mature or old stands.
- By definition, the recruitment zones have large deficits in mature and old forest. However, a recruitment plan is in place to create future corridors of mature and old forest.
- Numbers have been updated with forest fire information from 2003 fire season and recent changes in MFRA's

## 6.0 Other Measures

### 6.1 Stocking Standards

RCFC has simply adopted – **without change** -- the stocking standards created by the local office of the Ministry of Forests. These are entitled “DCO FSP Stocking Standards V 2.0” and were received July 12, 2005 from Columbia Forest District Staff

### 6.2 Invasive Plants

Invasive plants have not been apparent within TFL 56, although knapweed has been noted on the highway right of way adjacent to TFL 56. We feel that the simple measures specified will suffice.

### 6.3 Range Barriers

There is no known present or historic use of the TFL 56 area for range purposes.

### 6.4 Commercial Helicopter and Backcountry Recreation

There are two commercial helicopter skiing and outdoor recreation companies operating in TFL 56. They are Canadian Mountain Holidays (CMH) who operate two lodges within or adjacent to TFL 56, and Selkirk Tangiers Heliskiing (STH) who operate in the southern portion of the TFL. Selkirk Tangiers’ clients are lodged at Revelstoke. There is currently one major commercial backcountry recreation operation in TFL 56. It is operated by Selkirk Mountain Experience (SME). SME clients stay at a lodge just South of the TFL in the Carnes Creek Valley – or in a satellite chalet in the Tumbledown area within TFL 56.

All of the above noted companies commented on the draft FSP. Their letters are contained in the *Review and Comment Document*. Their concerns are summarized in the Referral and Comment Summary, also in Appendix 4.

The two helicopter ski companies (CMH and STH) were concerned about the impacts of RCFC’s forest management activities on their operations and the lack of a means of input into RCFC’s planning. CMH urged RCFC to craft a set of objectives strategies and results tailored for commercial heli-skiing and heli-hiking while STH recommended that the plan include and address the interests and values of tourism.

To deal with the two heli-ski company’s interests, we will carry out the following actions:

1. Continue to maintain a mapping system that includes information on location of ski runs, skier drop-off points, skier pick-up points, and infrastructure such as lodges<sup>2</sup>.
2. Refer for comment, any cutblocks that are within ski runs or that interfere with skier drop-off or pick-up points.
3. Determine, in conjunction with heli-ski company staff, informal visual quality management around lodges.
4. Meet periodically to share information on forest management and heli-ski issues.

---

<sup>2</sup> The heli-ski company must continue to provide RCFC with location information of runs, pickups, drop-offs and other infrastructure.

To deal with the issues identified by SME, RCFC will:

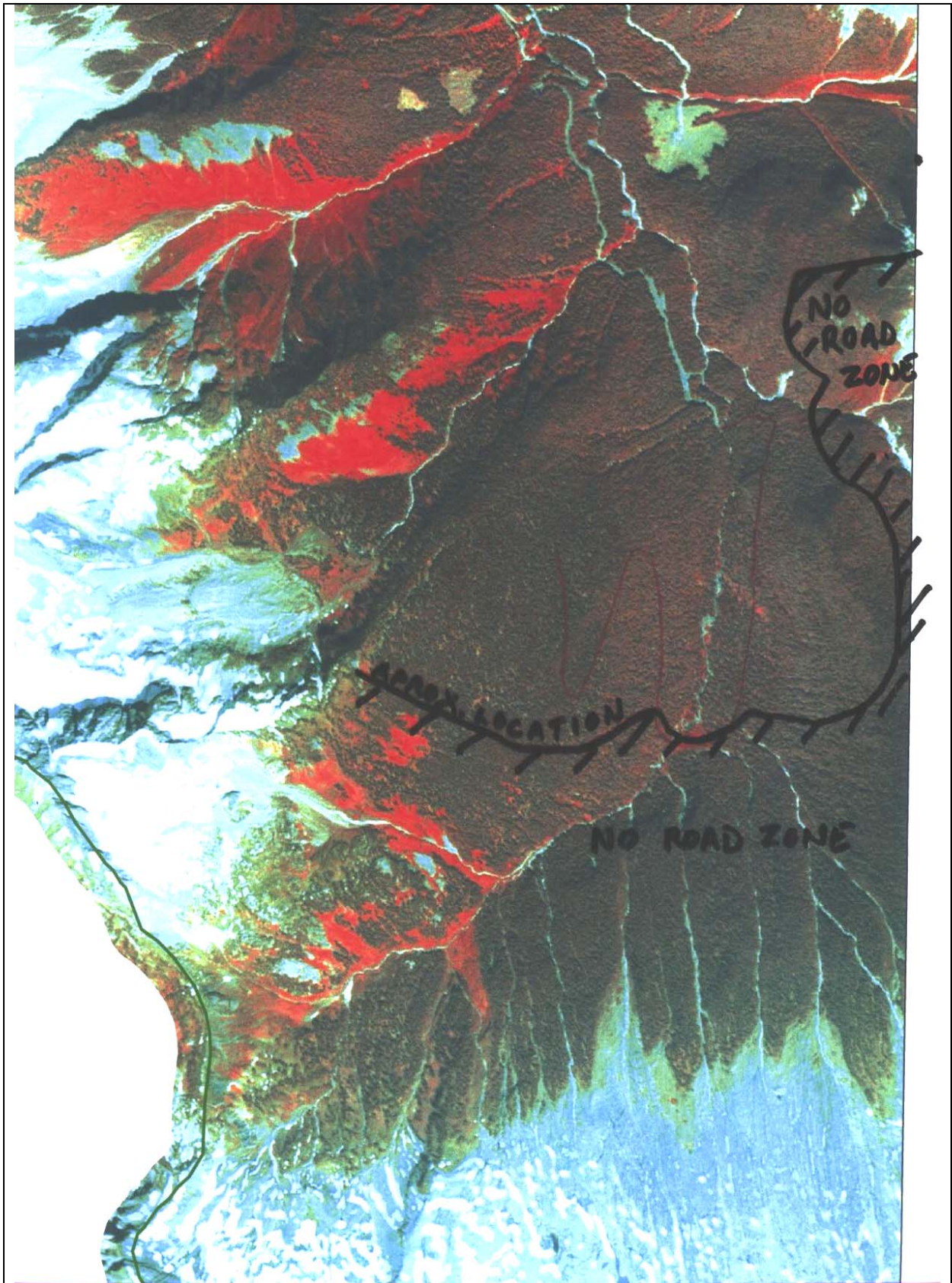
1. Not build road in an area within the Tumbledown Valley (see orthophoto map on following page). The purpose of this restriction is to limit the likelihood of providing a travel corridor for snowmobile access.
2. Refer harvest plans in the Tumbledown Valley to SME for comment.
3. Continue to work with SME to discourage winter motorized use in times and places where it would unduly damage SME's business.

### **6.5 Referral Consultation Pilot Project**

The Revelstoke Community Forest Corporation (RCFC) and the Okanagan Indian Band (OKIB) have jointly begun work on a process entitled the *Referral Consultation Pilot Project*. Tentative objectives are paraphrased below:

- Create a streamlined and timely referral/consultation process
- Develop a positive and productive working relationship
- Develop a structured communications process regarding RCFC's plans

This project is separate from the forest stewardship plan process; however there may be overlap in parts of the FSP such as in *cultural heritage resources*. Where there is overlap, and the Pilot Project is suggesting a change to the FSP, RCFC will consider amending the FSP.



Excerpt from Orthophoto showing Tumbledown Area with "No Road Zone"  
Mapsheet 82M040, Approximate scale 1:20,000

## 7.0 CUMULATIVE EFFECT OF MULTIPLE FSP'S

There are no other FSP's within TFL 56. BCTS is currently (June 2005) creating an FSP that will cover their operating areas within TFL 56.

## 8.0 REVIEW AND REFERRAL

The FSP has been advertised for two weeks in the only local newspaper. As well, letters have been sent out to over 30 individuals or groups. The logic for determining who to send to is:

Referral Group	Referral Contact
General Public through advertising	Advertised as per regulation
First Nations	All First Nations groups specified in "First Nations Consultation by Landscape Unit" dated February 16, 2004. Addresses are from "Columbia Forest District First Nations Contact/Mailing/Distribution List" updated April 6, 2004. Copies of these documents are provided in "Other Documents".
Local Government	Only two local governments are in our TFL area – the City of Revelstoke and the Regional District
Water Licenses	All water licensees that were listed on <a href="http://www.lwbc.bc.ca/06search/water.html">http://www.lwbc.bc.ca/06search/water.html</a> as of February 21 have been sent letters. The addresses are from the same website. A copy of this list is provided in the Appendix
Provincial Government	Ministries of Energy and Mines, Sustainable Resource Management, Water land and Air Protection, and Transportation have been sent referral letters. The Ministry of Forests has been sent a copy of the draft FSP
Parks Canada	Glacier National Park is adjacent to TFL 56, and Mt Revelstoke NP is nearby, so they have been sent a referral
Commercial Recreation Tenures	All known commercial recreation tenures that have significant operations in TFL 56 have been sent referrals
Crown Corporations	BC Hydro, as the operator of the Revelstoke Dam, has been sent a referral
Clubs and Societies	The clubs and societies that have shown an interest in RCFC operations in the past have been sent referrals.
Trappers & Guide Outfitters	All trappers and guide/outfitters have been sent referrals. The names and addresses for the trappers have been suppressed because of privacy concerns

Full information on review and comment is in the *Review and Comment Document*.

## 9.0 REVISIONS

An area for future revisions to the FSP is provided in Appendix 5 of the FSP.

## 10.0 MAPS

One map of 1:50,000 scale was sufficient to provide all the necessary information. The map specifications are:

Scale 1:50,000

FPPR Requirements to display on map:

- ◆ FDU's – LU R19, LU R12
- ◆ Ungulate Winter Range: None
- ◆ Wildlife Habitat Areas: None
- ◆ Fisheries sensitive zones: None
- ◆ Scenic Area: None
- ◆ L1 Lakes:
- ◆ Community watersheds: None
- ◆ OGMA's: None – these are being formulated, but are not complete
- ◆ Areas where timber harvesting is prohibited by enactment: None
- ◆ Cutting Permits
- ◆ Road Permit roads

Non-FPPR items to show:

- ◆ Old blocks and CP numbers
- ◆ Status – NSR/SR
- ◆ Private land
- ◆ Keystone Standard Basin LRUP boundaries
- ◆ Operability Line
- ◆ Caribou Lines
- ◆ Biogeoclimatic zone lines
- ◆ MAC biodiversity lines
- ◆ Everything should be shaded except areas available for harvest
  - MFRA's
  - Timbered area above operability
  - Non timbered